

BEACHPLUM
Q I L T E R S

N.O.A. N.J. Chapter #321

Underlined denotes Guild Meeting

Minutes of February 21, 2014 Meeting

At 6:45 pm the meeting was called to order by president Ellen H.

Our space travel tonight URANUS, 1.8 billion miles from the sun.

Pat L. stated 2000 quilt raffle tickets sold to date, Mancuso show coming up.

Treasurers report by Ann B. \$6,785.20, accepted as read.

Minutes from February meeting accepted as written in the newsletter.

Block of the month won by Kathy S.

Fantastic Show and Tell as always.

Challenge quilts were displayed and voted upon, Winners; Ann B. first, Joyce W. second and Barbara B third

Quilt registration for the show needs to be completed no later than March 12, 2014.

Great speakers, Jan and Gary Fulton. A new twist on landscape quilts. Very interesting and innovative.

Meeting adjourned at 8:45 pm.

Respectfully,

Jane Schoonfield

From Ellen:

The Programs and Block of the Month chairs will be stepping down in June. We will need a new Programs chair and BoM co-chairs. These are important positions and form a base for guild activities. Please let Linda Felton know if you are interested in filling a position.

Show & Tell February 2014

- Nancy D—Santa quilt
- Joyce W—Sweatshirt, charity quilt, four small quilts for auction
- Chris L—Yellow brick road
- Connie S—Southwest quilt for Restore the Shore
- Cathy S—Quiltmaker May—swirlabout
- Sharon M—Paris quilt, music theme, Dutchman's puzzle
- Sophie K—Baby quilt
- Janet P—Patriotic pillowcases
- Fran G—Two seaglass quilts
- Jane S—Two small auction quilts
- Pat T—Scrappy lap quilt
- Jeannette M—Two memory bears



February 2014 Show & Tell Pictures (con't)



Quilt Show and Raffle

2014 Raffle Quilt

Pat Lundervold has the raffle quilt and tickets. Please call her (732-681-5196) or email (patlundervold@hotmail.com) for more tickets.

The results of the Mancuso Springfest quilt raffle are \$584. Many thanks to the members who attended the show and worked at our table.

Tickets from the membership sales are accepted on an ongoing basis, up to the days of the Show.



Gift Basket Raffle—Last Call

Guild members are encouraged to donate items to be included in the gift baskets to be raffled at the April Quilt Show and Sale. The themes (and a few suggestions) are as follows:

Beach—SPF lotion, beach towel, beach toys, guide books, disposable camera.

Chocolate Lovers—Dipped strawberries, assorted candies, fudge sauce, chocolate scented candles, candy dish.

Gardeners—garden tools, bucket, gloves, insect repellent, potting soil, planters.

Spa—Soaps, candles, slippers, robe, soothing music, manicure tools.

Quilting/Sewing—You know what to do here!

Quilt Show Committee Report

The quilt show committee met on February 28, 2014. The plans for the show are progressing quite nicely. The committee has decided that given the difficulties our members have faced since Sandy we are opening the quilt show entries for quilts made before April 2012 as long as the quilt has not previously been entered into one of our shows. If you are unsure whether you previously entered the quilt, contact Erma Hoover. She has records of previous entries. The entry date has been extended to March 14, 2014. Remember in order for our show to be successful we need quilts. All other rules still apply.

We will need all hands to help with the set up and take down as well as during the show. As a bonus, anyone working at the show will receive a planet sticker. So if you need to make up a missed meeting, this is the way to do it. Also as an added bonus, we plan a preshow gala for members only who work on the show. The gala will be on Friday evening April 4 after set up is complete. The country store will be open for an early sale.

Quilt Show Country Store

Last Chance for Country Store Items!!!!!!

With regard to fabric, **the country store will not be taking anymore fabric.** We have received a generous amount from members and quilters from other guilds, so please do not bring in any more. If you have some you want to donate think of charity quilts. The country store thanks everyone for your donations of fabric; it was amazing to receive so much.

This is still your last chance though, for you to clean out those closets and bins of quilting and craft items, other than fabric, that you no longer use or want. So get busy and start going through your things this week and bring them to the March meeting for the country store to sell.

The country store will still take books, magazines, patterns, rulers, cutting mats, thread, quilting puzzles etc. We would like to have all those other odds and ends to do with quilting and crafting to sell at the store too. If you have something you are not sure about just give Debbie a call or send an e-mail.

Also, don't forget if you plan on selling your quilt please make sure to fill out the form that is on the web site and let the country store chairperson know. For those who do not know, the guild gets 20% of the sale of any quilt sold.

Thanks, Debbie Perks

For more information on the 2014 Quilt Show, including

- registration rules and forms
 - flyers
 - press release
 - and more...
- please go to our website:

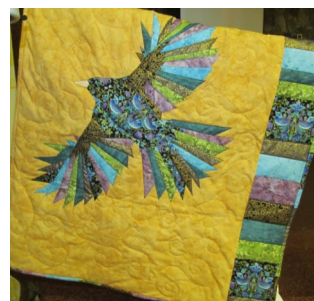
<http://beachplumquilters.org/2014quiltshow.html>

Quilt Show—Quilt Registration

- Intake— Wednesday, April 2: 10 am to 3 pm
- Give back— Sunday, April 6: after 4:30pm
- Remember that each quilt is to be placed in a separate CLOTH bag.
- Each quilt must have a hanging sleeve (see instructions on our website) and the quilter's label must be covered if the quilt is being judged.

Challenge Quilts

And the winner is... Ann B



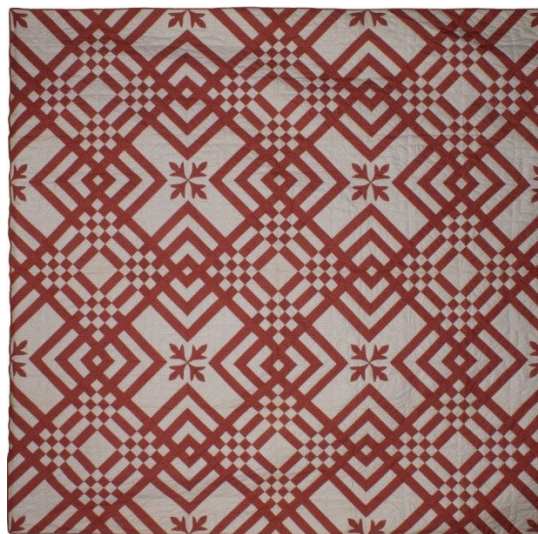
Block of the Month



February



Historical and Contemporary Quilts In a Major Exhibition in Flemington NJ April 5-April 13, 2014



In the continuing celebration of Hunterdon County NJ's 300th Anniversary, a major exhibition of quilts will be exhibited in the Assembly Room of County Building One, Route 12 in Flemington for nine days from **Saturday, April 5 to Sunday, April 13**. Hours are from 10am to 4pm each day with extended hours to 6:30 pm on Tuesday April 8 and Saturday April 12. There is adequate parking and admission is free.

THE BEACHPLUM QUILTERS OF THE JERSEY SHORE, INC.

P.O. Box 749

Island Heights, NJ 08732-0749

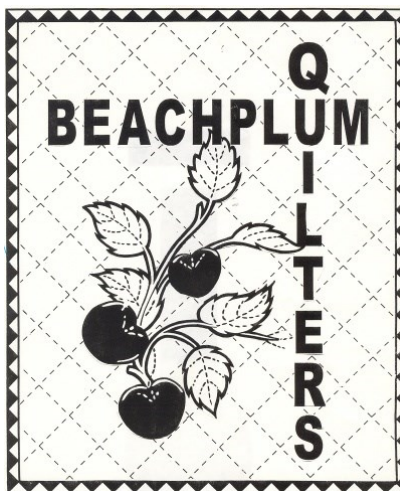
Meetings are held the 3rd Friday of
each month September through June at
the Presbyterian Church of Toms River,
1070 Hooper Avenue, Toms River, NJ 08753

DOORS OPEN AT 6 pm;

MEETING BEGINS AT 6:30 pm

www.beachplumquilters.org

E-mail: beachplum85@yahoo.com



Executive Board

President

Ellen W. Hyers

Vice President

Linda Felton

Treasurer

Ann Bergstedt

Recording Secretary

Jane Schoonfield

Corresponding

Secretary

(position available)

Our Committee Chairs:

Audit Committee

Linda Felton

Charity Quilts

Ellen Hyers

Communications

Joyce Weiss

Historian

Linda Felton

Hospitality

Mary Pabst

Membership

Jackie Pearce

Programs

Nancy Degan

Shirley Moramarco

Guild Activities:

Jo Ann McCoy

Block of the Month

Jo Ann McCoy

Rita Russo

Door Prizes

Barbara E.

Show & Tell

Shirley Moramarco

2014 Quilt Show

Ellen Hyers

Shirley Moramarco

Newsletter Editor

Marcia Guza

Crafty Fabrics

750 Mantoloking Rd., Brick, NJ 732-920-6220

Classes & Workshops available year round.

Tues-Fri 9:30a-4:00p Sat- 11:00a-4:00p

Tues & Wed 7 PM-9PM

www.craftyfabricsquilting.com

Diane@craftyfabricsquilting.com

10% discount to BPQ guild members!

Deadline for the next newsletter is

April 4, 2014

E-Mail your news using Arial font to

Marcia_guza@yahoo.com

REFRESHMENTS

Coffee and tea will be provided. Otherwise, bring your own beverage.

Assignments for additional refreshments are as follows:

A through **E**—please bring a dessert, fruit dish or nosh.

Everyone else can participate if desired. Please remember to clean up your own dishes after the meeting.

NEXT MTG CHECKLIST

- Name Tag and a welcome smile for guests
- **2 Canned Items for the Church Food Pantry**
- Block of the Month
- Coffee Mug, Plate
- Show & Tell
- Assigned Refreshments
- Donation items for Quilt Show
- Quilt Raffle tickets

Quilt Show Dates:
April 5-6, 2014