

the BEACHPLUM SAMPLER

The Newsletter of the Beachplum Quilters of the Jersey Shore



Volume 30 Issue 7 March 2016

Celebrating Our 30th Year 1985-2015

N.Q.A. N.J. Chapter #321

President's Message

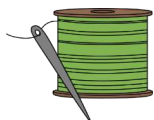


Our quilt show is next month and it is an exciting time for our guild. Beachplum is full of very talented quilters; we see it every month at Show and Tell. I know some of you are hesitant to have your quilt judged. It can be intimidating. I came across some judging tips from the Ladies of the Lake Quilt Guild from Kelseyville, CA. I thought their judging tips pdf was very good and I'd like to share it with you.

"Judging is such a harsh word. It can intimate even the hardest among us. A quilt judging is really an evaluation. Every quilt has good qualities. There is always room for improvements. If a quilter receives a constructive comment from a judge, it should be viewed as a learning opportunity, not a criticism. Remember, a quilt judge is trained to know the correct way a quilt should be constructed, but it doesn't mean they possess the skills to create a prize winning quilt. The most important thing is to have fun with the quilting. The judging process is called the "Pathway", similar to the path a quilt maker takes to construct a quilt."

You can go to the pdf and read about the "pathway" and the components a judge uses to evaluate a quilt.

http://www.llqg.org/uploads/2/6/6/3/26632588/quilt_show_judging_tips.pdf



happy quilting,
jackie

Inside This Issue

| | |
|------------------------------------|-----|
| President's Message, Calendar | 1 |
| Minutes | 2 |
| Show & Tell | 3-4 |
| Programs and Fundraising | 5 |
| Quilt Show | 6-7 |
| Classifieds and Block of the Month | 8 |
| Local Quilting Events | 9 |
| Refreshments, Committees, Ads | 10 |

Meetings/Events Calendar 2015- 2016

- Sep 18—Pizza Party, Caregivers Presentation and Big Show & Tell
- Oct 16— Ellie Greco, quilt and textile historian
- Nov 20—Make It & Take It
- Dec 18—Holiday Dinner & Ugly Sweater Contest
- Jan 15, 2015— Trunk Show by Linda Felton
- Feb 19—QUILTO
- Mar 18—Fashion Show and Challenge Quilts
- Apr 9-10—BPQ Quilt Show
- May 20—Deborah Kalenty "Tucker Tool Time Lecture & Trunk Show"
- May 21—Workshop on Tucker Tools
- Jun 17—Installation Dinner

Underlined denotes Guild Meeting

Minutes of February 19, 2016 Meeting

Our meeting was called to order at 6:30 p.m. by our President, Jackie P. as she welcomed all members, new members and visitors. A motion was carried and January minutes were approved.

Treasurer's Report - Presented by Ann B. Beginning checkbook balance of \$8,274.88; Total receipts \$518.00; Expenses, \$635.20 and Ending checkbook balance \$8,157.68. Treasurer's report was approved.

CHARITY QUILTS - Marge F. announced that 12 quilts were given out to long term patients unit at K. Hovnanian Children's Hospital at the Jersey Shore University Medical Center in Neptune, which is actually the revamped pediatrics unit at the hospital. The next batch of quilts will go to Providence House and/or down to Appalachia. Marge would also like to know if someone is going in that direction any time soon.

PROGRAMS - Paula P. stated the song, "I'm Sexy & I Know It" may be one of the contenders for strutting our fashions, on the runway, for the Fashion Show which will take place at the March meeting. She is also taking any other suggestions. Paula is accepting any last minute entries up to the evening of the Fashion Show. Our speaker for October 2016 will be Vickie Mathas who taught in NJ public schools and has been an artist for 32 years. Ms Mathas uses mixed media approach to achieve her Art Quilts. October's 2016 lecture will be flower pounding, using nature as her materials, and followed by a workshop the following Saturday. More information on quilt show demos will be listed in the March newsletter.

QUILT SHOW - The next Quilt Show meeting will be Friday March 4, 2016 at Ellen H's home at 6:30 p.m. This is the final meeting before the Show in April and is imperative all chairs attend. The final day for competition registration will be at our March meeting, or you can send an email to Erma H. with the appropriate information regarding your entries. Ellen encouraged and elaborated on the importance of entering the competition stating that it's a "learning journey". Having our quilts critiqued only improves our ability to achieve and perfect our art. As quilters we should all rally around one another's work and enjoy their quilts and each other's achievement.

PUBLICITY - Laurie S. has placed an ad in the "DATEBOOK" section of the Asbury Park Press for a two week period prior to the Quilt Show. Everyone should refer their friends to the Press for information regarding the Show.

BASKET RAFFLES - The themes are: Coffee & Tea - Booze & Chocolate - Garden - Baby - Italian - Sewing/Quilting. Our last collection day will be at the March guild meeting. Please see Gloria S.

QUILT RAFFLE - Pat L. announced that we have made a profit of \$800.00 on our raffle quilt. Our next opportunity to sell additional raffles will be at the Mancuso Show on March 3rd, 4th, 5th & 6th, 2016. Our goal will be to sell an additional \$100.00 per shift.

SMALL-QUILTS AUCTION - Liz H. announced she has 16 mini quilts and needs at least 30. Liz will be accepting the auction quilts until the day of the show.

CHALLENGE QUILTS - Rita & JoAnn will be collecting Challenge quilts at our March meeting. Please include your name, phone number, brief description and registration, as per your instructional packet. Judging will be held the same evening. The challenge quilts will not be returned, but held by Rita and JoAnn to display at the Quilt Show.

NAME TAGS - Jackie P. has done an amazing job on our name tags. If adding additional fabric please use the color purple. She has left the final presentation up to each one. Jackie asks to please have the tags completed and worn by our March meeting.

BLOCK OF THE MONTH - The block for March will be #3. BOM was won by Janet P. and the fat quarter by Sharon M.

SHOW & TELL - Many quilts were presented by our Guild members, representing exactly who we are as quilters and sewers. The quilts represented traditional as well contemporary, color and variety of patterns. How much better can it get?

Respectfully submitted by,
Gloria Squicciarini
Recording Secretary

No April Meeting or Newsletter

Please note that since our Quilt Show will be held in April,
there will be no April meeting or newsletter.

Show & Tell February 2016

- Jackie P—Small quilt auction quilts
- Ellen H—Shoes
- Joyce W—Three small quilts for auction
- Kristin A—Bella's quilt
- Janet P—Two charity quilts
- Cathy S—One charity quilt and two small quilts
- Laurie S—One small quilt for auction
- Sophie K—Charity quilt
- Shirley M—Hexie table topper and a quilt for the small quilt auction
- Pamela G—Work in progress, beach trail wall hanging
- Barbara L—Completed quilt she showed last month
- Pat McC—Baby quilt from Big Book of Baby Quilts and fabric blocks for baby shower
- Liz H—Pink flannel charity quilt and jelly roll race quilt
- Sue S and Pat L—Quilt and door prizes for quilt show



Jackie



Ellen



Kristin



Joyce



Sophie



Janet



Cathy

Many thanks to Laurie S for taking pictures for the newsletter!

Show & Tell February 2016 (cont)



Shirley



Pamela



Barbara



Pat



Liz



Sue and Pat

I hate it when we
spring forward.

I lose an hour of
quilting time!



QUILTINGDAILY.COM
someecards
user card



Programs

MARCH PROGRAM

THE “ELEVEN LOVELY LADIES FASHION SHOW”

Join us as our Beachplum Beauties strut their stuff exhibiting quilted jackets, vests, jewelry, shoes, gloves, purses, tote bags, and even an apron. Perhaps the show will inspire some future workshops?

Also, the Quilt Show “Garden of My Dreams” Challenge Quilts, “My Creative Garden,” will be exhibited for judging.

April 9 & 10—Quilt Show (no April guild meeting)

May 20, 2016—Deborah Kalenty “Tucker Tool Time Lecture & Trunk Show”

May 21, 2016—6 hour Workshop —“Using the Tucker Tools”

June 17, 2016—Installation of Officers and Dinner

May Program and Workshop with DEBORAH KALENTY

Deborah Kalenty is the owner of Quilter’s Obsession, an online quilt store, and a quilt show vendor. She is also a certified instructor for Studio 180 Design (Deb Tucker tools & patterns). She will present a lecture at our May 20 meeting titled “Tucker Tool Time Lecture & Trunk Show” in which she will demo the Tucker tools & patterns. The following day, Saturday, May 21, she will conduct a 6-hour hands-on workshop to teach participants to use two of the Tucker Tools to construct half-square and quarter-square triangles (the Tucker Trimmer) & Flying Geese blocks (the Wing Clipper).

A sign-up sheet will be made available to members at our January meeting. There is a limit of 15 participants for the workshop. Deborah will also have a selection of Tucker Tools available for sale at both her lecture & workshop. The cost of the workshop is \$20.00 which helps defray the cost of Deborah’s workshop fee.

Beachplum Fundraising

Please remember to bring in your raffle ticket books and monies collected!



Quilt Show - April 9-10 2016



Beachplum Gift Baskets

And The Countdown Is On

The themes are:

Garden, Baby, Italian, Booze & Chocolate,
Coffee & Tea, Quilting

**The deadline for all material donations or monies by
Friday, March 18, 2016
At the Guild Meeting. Please see Gloria S.**

Demonstrations and Membership Booth

At Quilt Show 2016, we'll have a booth where members will demonstrate several quilting techniques to the show attendees. Apart from the "entertainment value," we're hoping to raise interest in our "little hobby" and entice others to join our great guild.

So far, our demo volunteers are:

Jane S & Shirley M: Paper piecing
Jackie P: Applique & hand quilting
Laurie Schnitzer – Easy pillow case
Kim Gimblette – Sashiko
Sue Gormly – Applique

Do YOU have a favorite technique you'd like to demo? Please contact me by phone, email, or text. The more the merrier!

Thanks, Paula P

PS: Demo Volunteers: Please let me know which day/days you'd like to do your demo and how much time you'd like. Then I can prepare a poster so attendees can schedule their time at the show.

Challenge Quilts

- Each challenge entry requires a 4" sleeve to hang at the quilt show.
- The label on the back must include information outlined in the Beachplum quilters of the Jersey Shore "Garden of My Dreams" quilt show rules 2016. **Have your name COVERED.**
- Each entry must be brought inside a cloth bag (no paper bags) marked with your name and phone number to identify owner.
- Inside the bag include a completed challenge registration form (please include the size of the entry).
- Include the index card with your name, phone number and a brief description of your quilt/item. This will ensure the correct challenge is placed inside the matching bag.
- Attach a photo of your challenge quilt for insurance record.
- No entry fee is required.
- All completely quilted challenge entries are **due March 18, 2016** for judging.
- Please note that the challenge committee will collect and hold the challenge quilts after the winners are selected. Please do not take them home. A committee member will bring them for registration to be hung together at the show.

Thank you for participating in this year's challenge. We hope you had fun making your "creative garden".

Rita R and Jo Ann M
Committee chairs

Quilt Show - April 9-10 2016**Quilt Show News**

Signup sheets for volunteers for the show will be available at the March meeting. Remember our shows are only as good as our member involvement. This makes it extremely important that everyone participate. Four hours of volunteer time gives you free entry on both Saturday and Sunday.

This year we plan an exciting addition with our Members booth. This will give us a chance to talk about quilts and our guild to interested individuals. The goal is to gain new members and to educate the public about our guild. Jane S. and Mary Lou G. are coordinating this activity.

We will also have demonstrations by guild members on different techniques. Paula P. will coordinate this group.

If there are any questions, please contact the following members: Challenge Quilt JoAnn McC. and Rita R.; Publicity Laurie S.; Door Prizes Sue S.; Appraisals Ellen H.; Ambiance Sue H.; Country Store Debbie P.; Judging Shirley M.; Mini Quilt Auction Liz H.; Raffle Quilt Pat L.; Registration Erma H.; Welcome Dona S. and Pamela G.; Baskets Gloria S.; Members Booth Jane S. and Mary Lou G.; Demos Paula P.; and Quilt Show co-chairs Ellen H and Shirley M.

Small Quilts Auction

Please remember to make and submit small quilts (maximum size 36") for the Small Quilts Auction to be held at the quilt show. Please contact Liz H if you have any questions.

Quilt Show Appraisals

Once again, Karen Dever will be at the quilt show performing quilt appraisals by appointment on Saturday April 9, 2016. An appointment for a written appraisal takes approximately one-half hour. Written appraisals are \$50 and oral are \$25. Any quilts made post 1975 are considered modern and only a written appraisal will be given. Karen can do appraisals for quilts hanging in the show. Karen will take walk-ins if time allows. If the Saturday appointments become full, she may come back on Sunday should there be enough interest.

For an appointment, contact Ellen Hyers at ewhyers@yahoo.com. Write "appraisal" in the subject line of your email.

Quilt Show Quilt Registration Note

There is no entry fee for quilts entered in the "non-judged" category. This is a great category if you want to display your quilt but do not want it judged. Entries will be displayed among the other quilts and provide a venue for anyone who wants to support the guild efforts. Our show will only be successful if we meet our 100 quilt quota.

Quilt Sleeve Instructions

Please follow this link for a great article on constructing a quilt sleeve (for hanging on a rod at the show). Note that for large quilts, the sleeve needs to be 90 inches from the bottom to prevent the quilt from laying on the floor. The top of the quilt will hang over the pipe and drape.

<http://www.quilts.com/sleeves.pdf>

Classifieds

For Sale:

Singer Featherweight sewing machine. Made in 1948. mint condition. Only used a few times back in the 50's. Asking \$300. Includes original case and parts. Booklets included.

Grace Co. EZ 3 no-baste frame. Expands 32" to 96" brand new. Asking \$100.

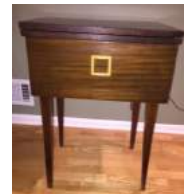
Pat Toscan 732-349-8205

For Sale: Children's book, Nutmeg, Basil and Grandma's Quilt (for age group 4 - 8). Story written by quilt member Deborah Ann Perks. This would make a nice gift for birthdays or just for that special little someone. Let that little one enjoy the adventure of Nutmeg and Basil as they sail the riverbank on their boat and find out what happens with Grandma's quilt. Cost is \$10., I will have copies with me at the meetings. Debbie P.

Free to Good Home:

Vintage sewing machine in cabinet. Machine looks great but you'd have to tinker with her to make her run smoothly.

Marcia Guza 732-610-4282 or Marcia_guza@yahoo.com



Block of the Month

February



Notice from the Food Pantry

Food stamps does not cover essential non-food items many clients are in need of: paper products (paper towels, napkins, toilet paper); baby products (diapers, wipes); toiletries (shampoo, deodorants, toothpaste, etc.); household cleaning products.

Local Quilting Events



The Garden Patch Quilters Present
"A Garden of Quilts"
March 12 & 13, 2016
 Wheaton Arts and Cultural Center
 1501 Glasstown Road, Millville, New Jersey 08332

Judged Quilts • Quilt Displays
Vendor Mall • Boutique Table • Raffle Quilt
Hourly Demonstrations

Anyone may enter a quilt to be judged or for display only.
 All sizes and techniques are welcome. Children up to 16
 years of age are encouraged to enter in the Junior Division.

Quilt Appraisals with Karen Dever

Written or Oral Appraisals Available
 Please call 856-327-6880 to schedule an appointment.

For Registration Form and Rules of Entry
 Go online at www.wheatonarts.org

Questions about registering a quilt? (856) 692-2972



Individuals with additional needs should contact us at least two weeks in advance. WheatonArts strives to ensure the accessibility of its exhibitions, events and programs to all persons with disabilities. Patrons with hearing and speech disabilities may contact WheatonArts through the New Jersey Relay Service (TRS) 800-852-7899 or by dialing 711.

Funding has been made possible in part by the New Jersey State Council on the Arts/Department of State, a Partner Agency of the National Endowment for the Arts, by funds from the National Endowment for the Arts, New Jersey Cultural Trust and the Geraldine R. Dodge Foundation. WheatonArts receives general operating support from the New Jersey Historical Commission, Division of Cultural Affairs in the New Jersey Department of State. Additional funding provided through a grant from the New Jersey Department of State, Division of Travel and Tourism.

Berry Basket Quilters present
"OUT OF HIBERNATION"

A QUILT SHOW

SATURDAY
APRIL 16, 2016
10 AM - 5 PM

SUNDAY
APRIL 17, 2016
11 AM - 4 PM

AT KIRBY'S MILL SCHOOL
HARTFORD ROAD, MEDFORD, NJ 08055

RAFFLE QUILT
MARKETPLACE
REFRESHMENTS

SILENT AUCTION
BOUTIQUE
CHALLENGE QUILTS

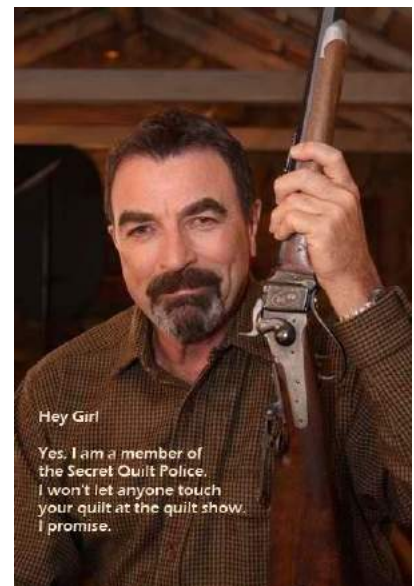
For more information:

www.berrybasketquilters.com
carol@berrybasketquilters.com

Pieceful Shores Lancaster Trip

Hello fellow quilters, It's that time year again and we will be taking our annual bus trip to Lancaster PA. We stop at Burkholders, Log Cabin, and Country Kettle Kitchen.

We have a few spaces open and would like to extend an invitation to your group. We will be going on April 14 and the cost is \$38.00. Anyone interested can contact Mary Jane Sharp 609-698-9520 or Helen Seiser 609-971-2798.



THE BEACHPLUM QUILTERS OF THE JERSEY SHORE, INC.

P.O. Box 749

Island Heights, NJ 08732-0749

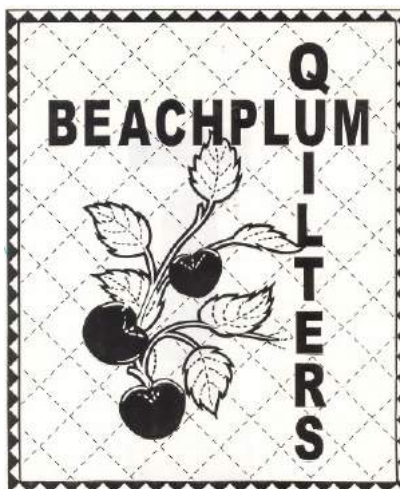
Meetings are held the 3rd Friday of
each month September through June at
the Presbyterian Church of Toms River,
1070 Hooper Avenue, Toms River, NJ 08753

DOORS OPEN AT 6 pm;

MEETING BEGINS AT 6:30 pm

www.beachplumquilters.org

E-mail: beachplumquiltmakers@gmail.com



Executive Board

President

Jackie Pearce

Vice President

Linda Felton

Treasurer

Ann Bergstedt

Secretary

Gloria Squicciarini

Our Committee Chairs:

Audit Committee

Linda Felton

Charity Quilts

Marge Frazee

Communications

Joyce Weiss

Historian

Linda Felton

Hospitality

Mary Pabst

Membership

Marlene Stoevers

Programs

Paula Patri

Block of the Month

Mary Lou Gilbert

Pat McCullough

Door Prizes

Debbie Perks

Show & Tell

Shirley Moramarco

2016 Quilt Show

Ellen Hyers

Shirley Moramarco

Newsletter Editor

Marcia Guza

Webmaster

Laurie Schnitzer

Fundraising

Pat Lundervold

Guild Activities

(vacant)

Crafty Fabrics

750 Mantoloking Rd., Brick, NJ 732-920-6220

Classes & Workshops available year round.

Tues-Fri 9:30a-4:00p Sat- 11:00a-4:00p

Tues & Wed 7 PM-9PM

www.craftyfabricsquilting.com

Diane@craftyfabricsquilting.com

10% discount to BPQ guild members!

Deadline for the next newsletter is

May 4, 2015

E-Mail your news using Arial font to

Marcia_guza@yahoo.com

MARCH MEETING REFRESHMENTS

Coffee and tea will be provided.
Otherwise, bring your own beverage.

Assignments for additional refreshments are as follows:

F through J—please bring a dessert, fruit dish or nosh.

Everyone else can participate if desired. Please remember to bring your coffee mug, plate, utensils, etc., and to clean up your own dishes after the meeting.



NEXT MTG CHECKLIST

- Name tag and a welcome smile for guests
- Block of the Month
- Coffee mug, plate
- Show & Tell
- Assigned refreshments
- Donations of items for the food pantry

Quilt Show Date:

April 9-10 2016